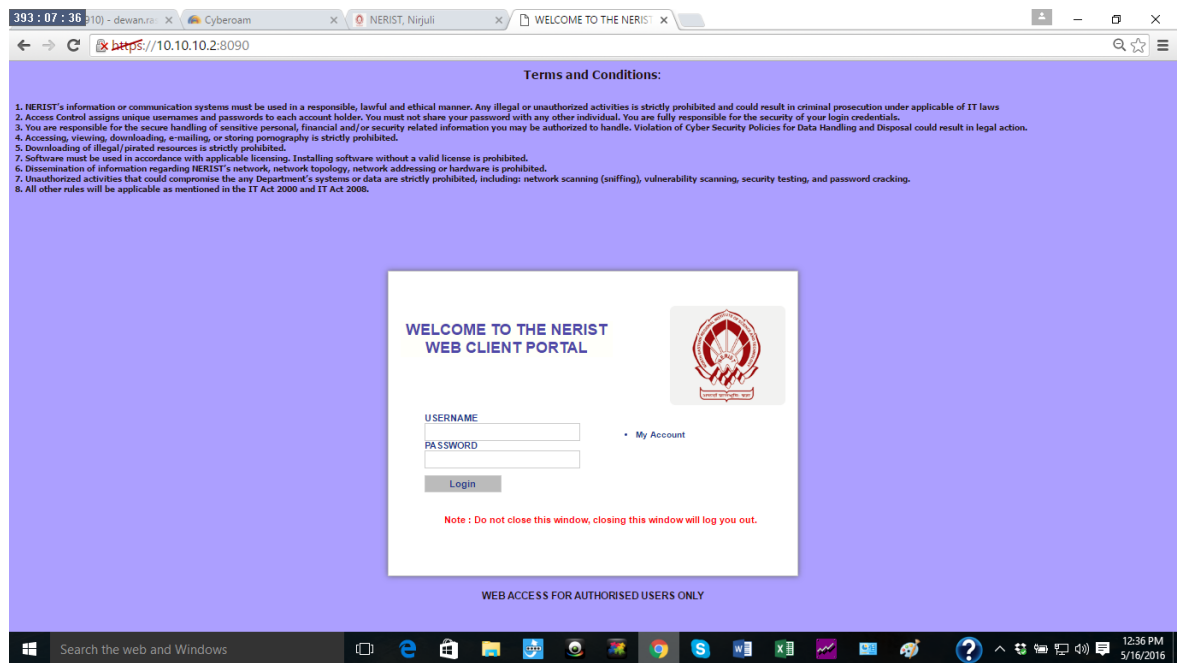


Users can authenticate to Cyberoam using one of following two process:

1. Using Cyberoam Web Portal
2. Using Cyberoam Client Application

Steps of Cyberoam Web Portal Authentication:

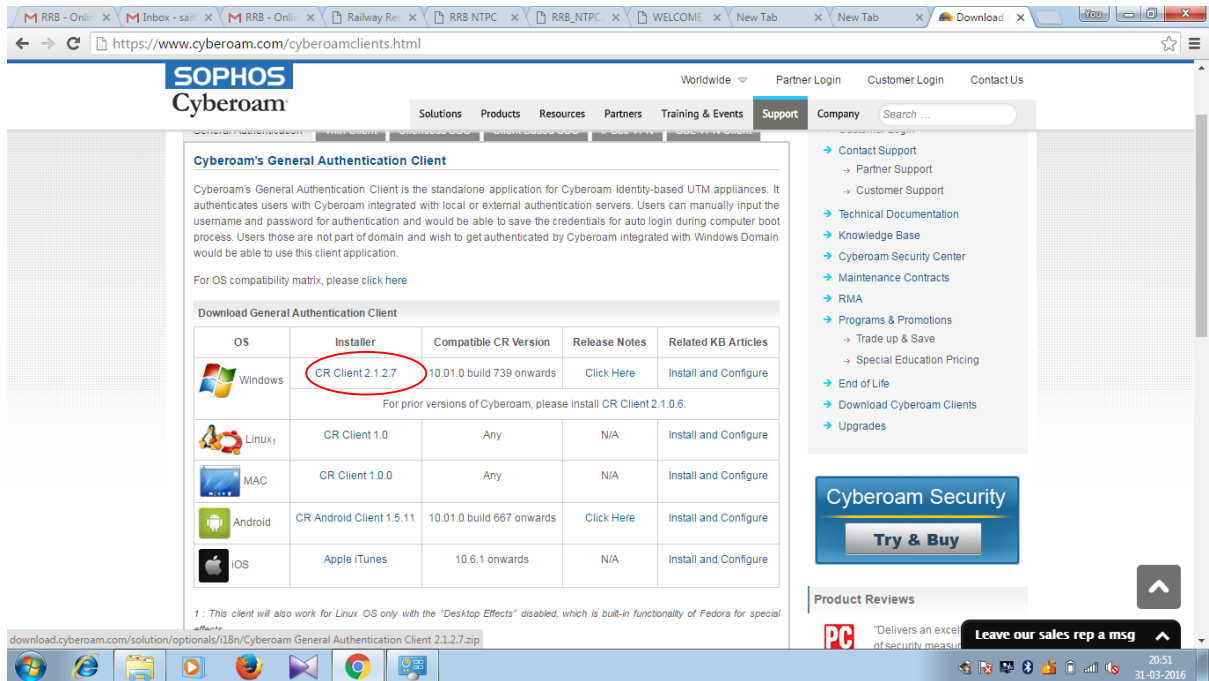
1. Brows <https://10.10.10.2:8090>
2. Provide Username and Password and Start browsing Internet.



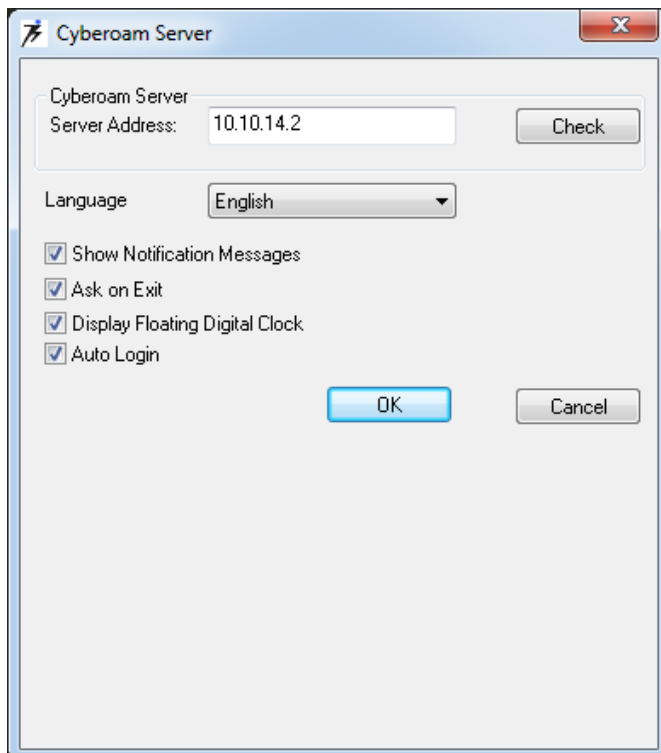
Steps for Cyberoam Client Download, Install and

Steps:

1. Go to <https://www.cyberoam.com/cyberoamclients.html>



2. Download the Installer CR Client 2.1.2.7
3. Unzip the downloaded file "Cyberoam General Authentication Client 2.1.2.7.zip" and install it.
4. After installation Go to the Created Icon "Cyberoam General Authentication Client" on your desktop and double click on it.
5. Set Cyberoam Server IP as: 10.10.14.2 and checked all the Check Boxes and click on OK.



6. Provide the username and password and click on Login.



The image shows a screenshot of a software window titled "Corporate Client" with a close button (X) in the top right corner. The window features the "Cyberoam" logo on the left, which consists of a colorful circular graphic above the text "Cyberoam". On the right side of the window, there is a small inset image showing two people in a meeting. Below the logo and inset image is a login form with the following elements:

- A "User name" label followed by a text input field containing "wtest1".
- A "Password" label followed by a password input field containing "xxxxxxxx".
- A "Login" button.
- A checked checkbox labeled "Save Password".

At the bottom of the window, the text "Not Connected" is displayed on the left, and "copyright by eLITESCORE" is displayed on the right, with a logo for eLITESCORE.