

SECTION A

Authentication by using Laptop or Desktop.

Step 1: Click on Wi-Fi icon on your laptop. Or open “Setting>Network & Internet”.

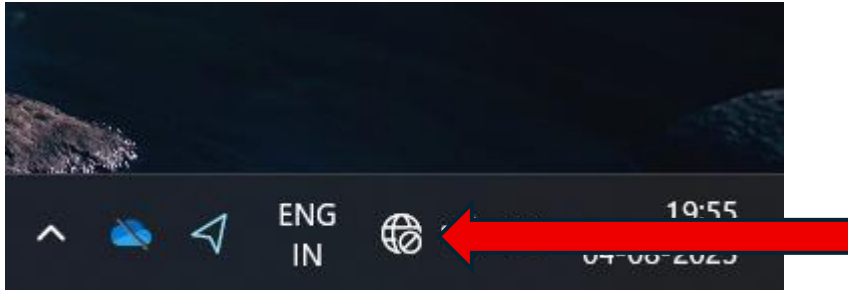


Image 1: Wi-Fi Icon.

Step 2: Enable your Wi-Fi adapter by clicking on icon shown below.

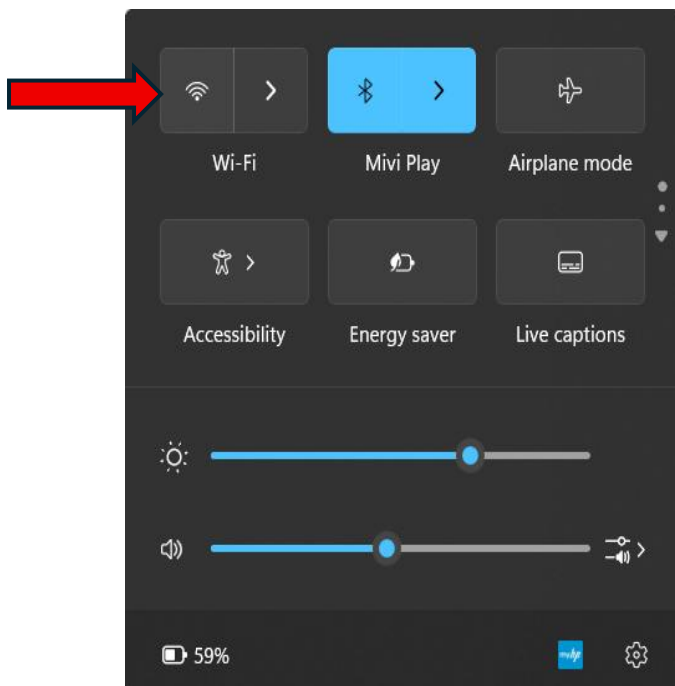


Image 2: Before Enable

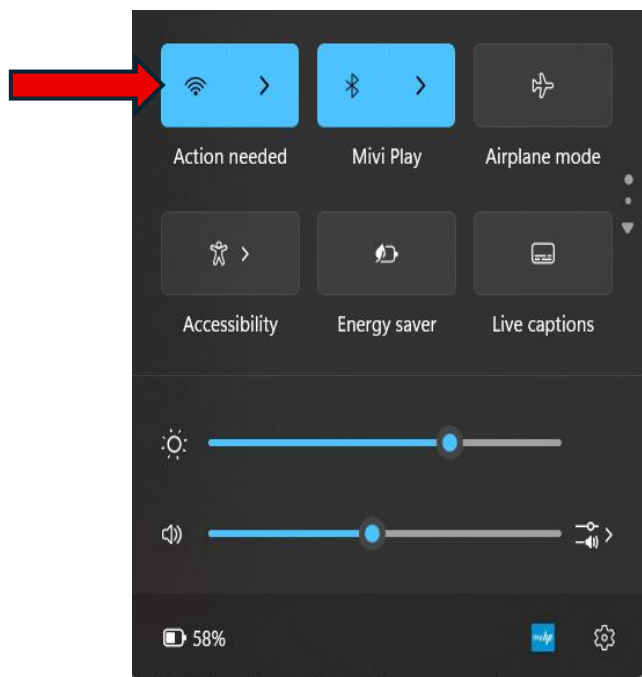


Image 3: After Enable

Step 3: Click on arrow button after Enabling your Wi-Fi adapter. After Clicking on arrow button, a list of available Wi-Fi network will pop up. (Shown in image 3)

NOTE: For this demonstration, Hostel Block A network is used. It will vary in the Hostel where you are staying. Steps will be same for all hostels.

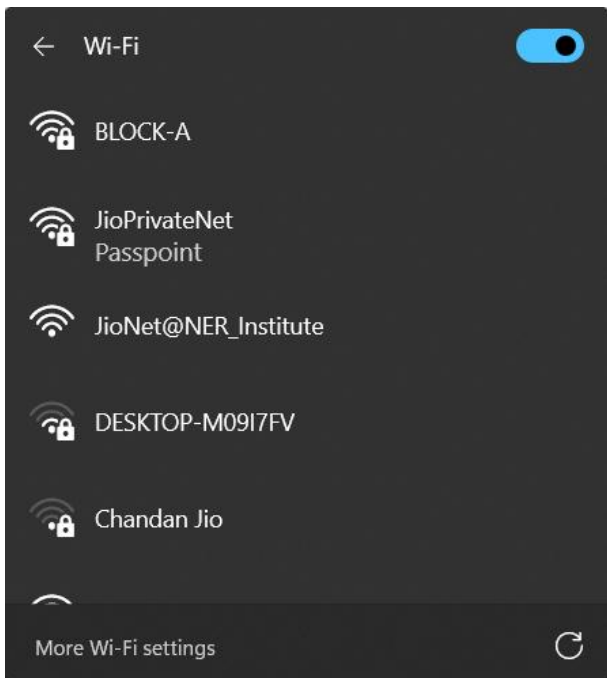


Image 4: List of Available Networks.

Step 4: Click on your hostel network. In this case, "BLOCK-A". and then click on "Connect".

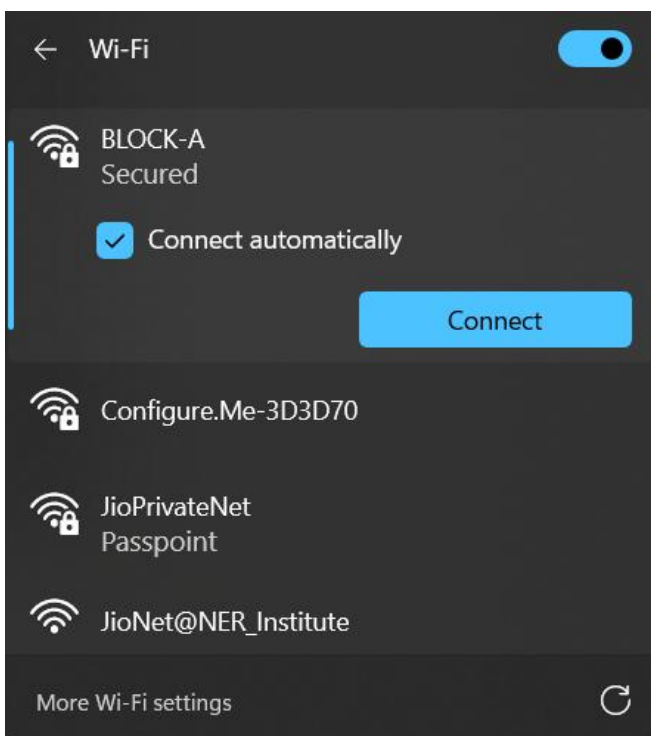


Image 5: Selection of hostel network.

Step 5: Enter Password and click “Next”.

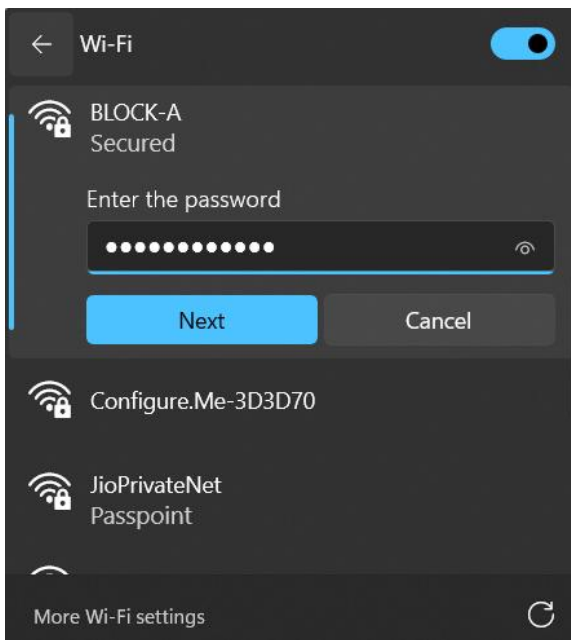


Image 6: Password field.

Step 6 : Open web browser and Go to <http://10.10.10.2:8090>, provide Username, Password, click on Login. (Image 7)

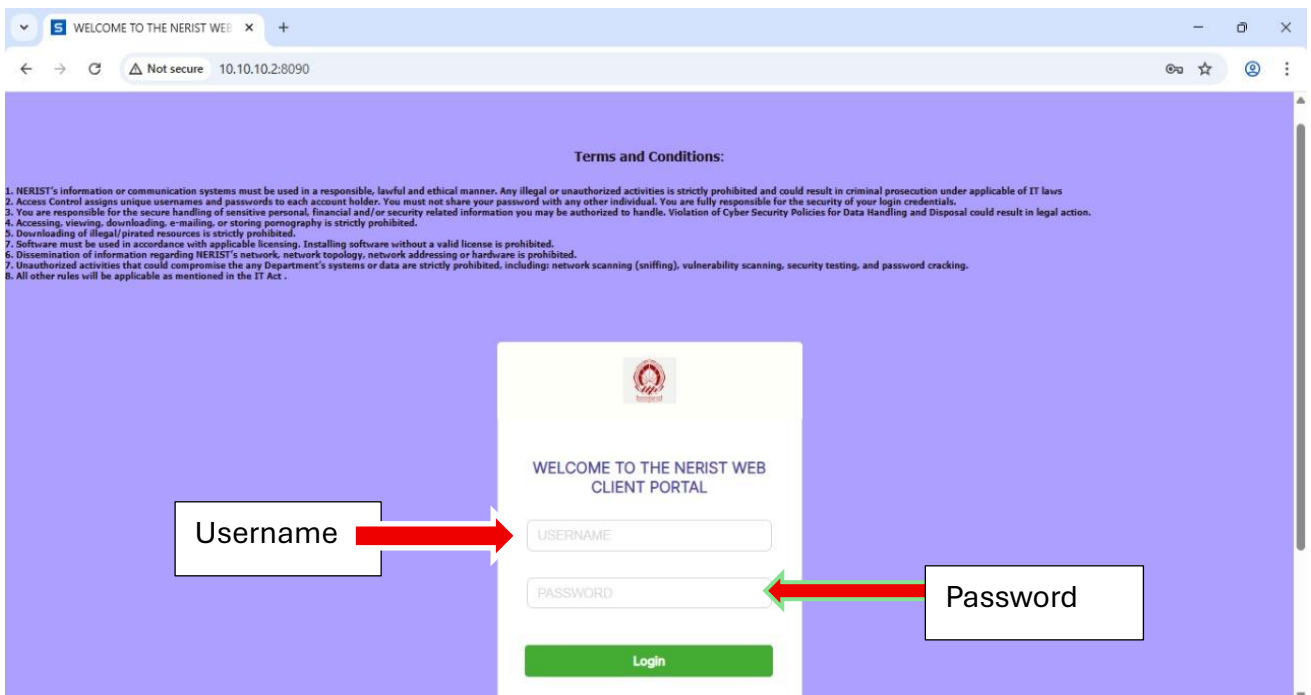


Image 7: Login Page.

Same page will be there with new message says, “You are signed in <your username>”. (Image 8)

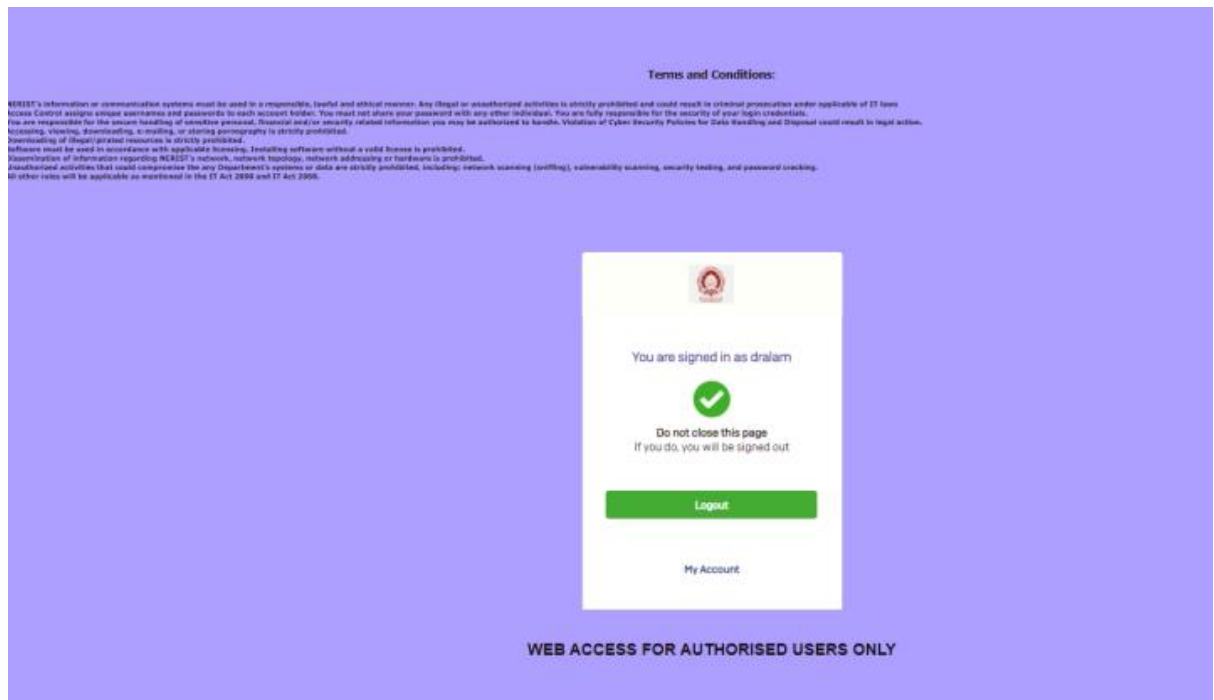


Image 8: Successfully Signed in.

Note: After Login Do Not Close the Login page during your Internet surfing. After finishing your surfing please Logout the session. If you directly close the page, your login session will be active and you will not be able to login from another system.

Authentication Process for Android

Steps 1: Go to Wi-Fi Connection, list of available networks will show (image 9).

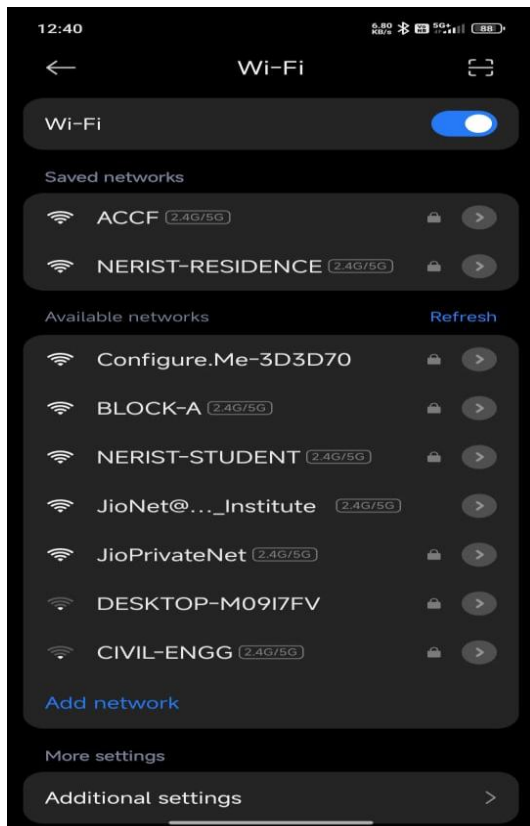


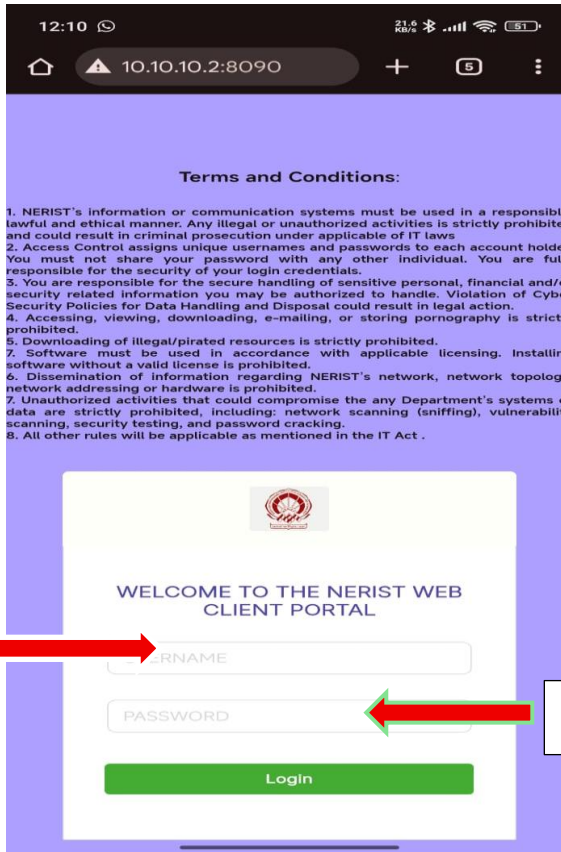
Image 9: List of Available networks.



Image 10: Password field.

Step2: Click on your hostel network. In this case, "BLOCK-A". and then click on "Connect" and enter Password (Image 10).

Step 3: Open web browser and go to <http://10.10.10.2:8090>, provide Username, Password, click on Login.



Username



Password

